

Daily Derivatives & Market Report

CONTENTS

Page No.	Particulars
2	Market Summary
3	Nifty Futures – Derivatives Snap
4	Bank Nifty Futures – Derivatives Snap
5	Activity in Nifty Options
6	What do Nifty Technical suggest
7	Derivative Analysis
8	Disclaimer

Index Trend Analysis

Pivot(Daily)	Close	S2	S1	Pivot	R1	R2	Daily	Weekly	Monthly
Nifty	11419	11245	11332	11486	11573	11727	Sell	Neutral	Buy
Sensex	38337	37768	38053	38556	38840	39343	Sell	Neutral	Buy
Nifty Futures	11433	11251	11342	11493	11584	11734	Sell	Neutral	Buy
Bank Nifty	29770	29169	29469	30007	30307	30845	Sell	Neutral	Buy
CNX IT	15384	15204	15294	15453	15542	15701	Sell	Neutral	Buy
CNX Midcap	16430	16083	16257	16567	16740	17051	Sell	Sell	Neutral
CNX Small Cap	5855	5759	5807	5891	5939	6024	Sell	Sell	Sell

Market Summary

Domestic Indices	Close	Points	% Chg
SENSEX	38337.0	-560.5	-1.4
NIFTY	11419.3	-177.7	-1.5
MIDCAP	14078.3	-285.4	-2.0
SMLCAP	13310.4	-247.7	-1.8
BSEFMC	11087.4	-167.3	-1.5
AUTO	16261.6	-544.6	-3.2
POWER	2003.9	7.3	0.4
REALTY	2141.1	-31.3	-1.4
BSE IT	15455.0	-109.8	-0.7
BANDEX	33464.0	-732.9	-2.1
OILGAS	13906.0	-80.7	-0.6
METAL	10239.7	-147.9	-1.4

Currency Futures	Close	Pre. Pts	% Chg
29-July-19 EUR-INR	77.48	77.50	-0.03
29-July-19 USD-INR	68.88	69.00	-0.18
29-July-19 GBP-INR	86.34	86.25	0.10
29-July-19 JPY-INR	64.03	63.99	0.05

Advance/ Decline	Adv	Dec	Un Ch.
NSE	401	1448	75
BSE	619	1919	133

FII/DII Capital Mkt*	Buy	Sell	Net
FII	4791	5741	(950)
DII	3906	3172	734

*NOTE: - FII AND DII data figure is provisional

Market Commentary

Indian equity markets extended their southward journey for second straight session on Friday, as both the larger peers -- Sensex and Nifty closed with the losses of around 1.50% each. Key indices made a slightly positive start of the day, aided with Finance Minister Nirmala Sitharaman's statement that the tax proposals in the Finance Bill 2019 are aimed at improving the ease of living and reducing pain of the citizens. Nirmala Sitharaman also said that budget proposals will promote Make in India and digital payment. Adding some relief, NITI Aayog Vice Chairman Rajiv Kumar said that the focus of the second term of the Narendra Modi government is accelerated economic growth led by the private sector and private enterprise.

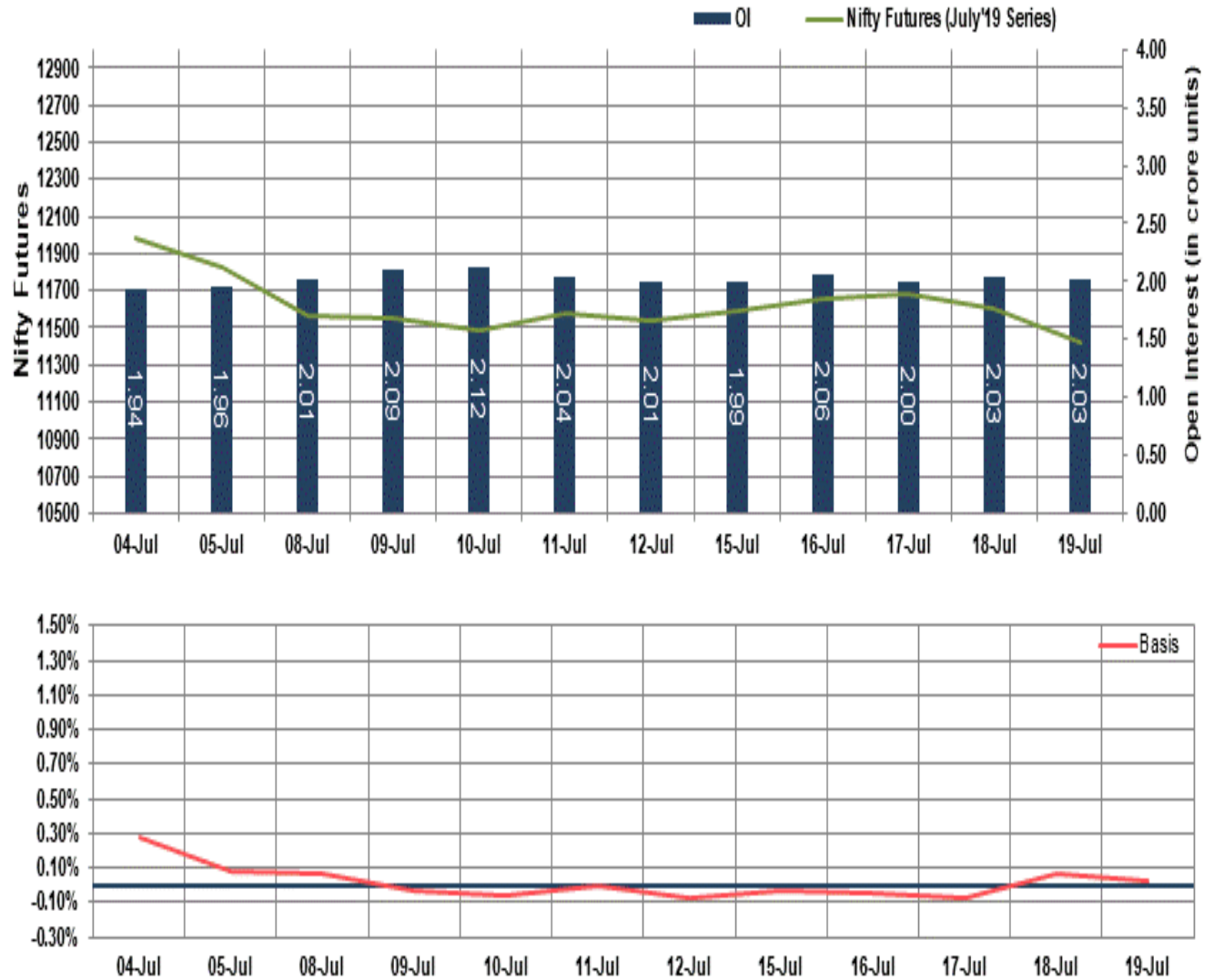
But, markets soon lost all of their gains to remain negative for the whole day, after the International Monetary Fund's (IMF) report showed that India's current account (CA) balance deficit grew to \$68 billion in 2018-19 from \$49 billion the previous year, and it said the deficit was justified by development needs. Market participants remained cautious, as sticking to his analysis that India's economic growth has been overestimated, Arvind Subramanian said he had raised doubts about the GDP numbers in 2015 when he was the chief economic adviser of the Modi government as he found inconsistency between projected growth and other macro indicators.

Market Turnover & FII Derivative Data

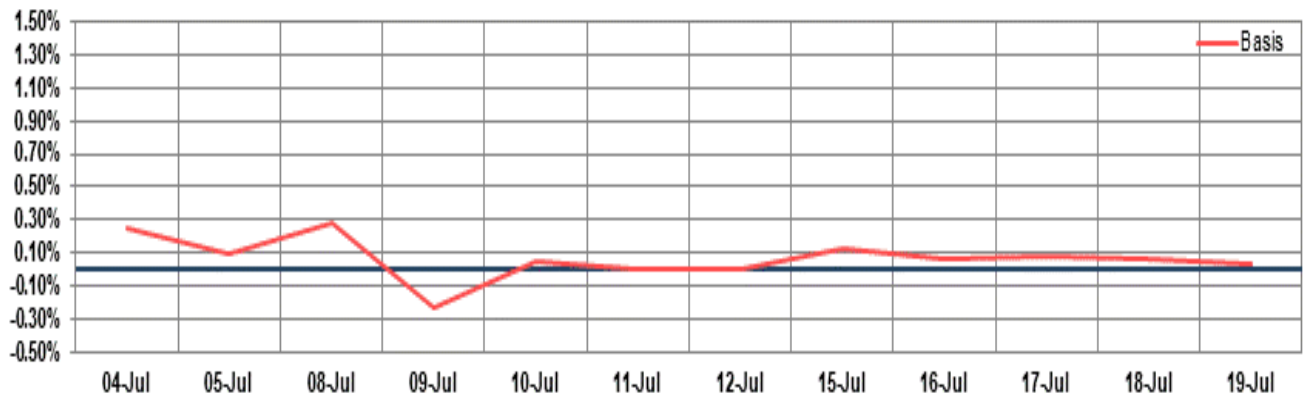
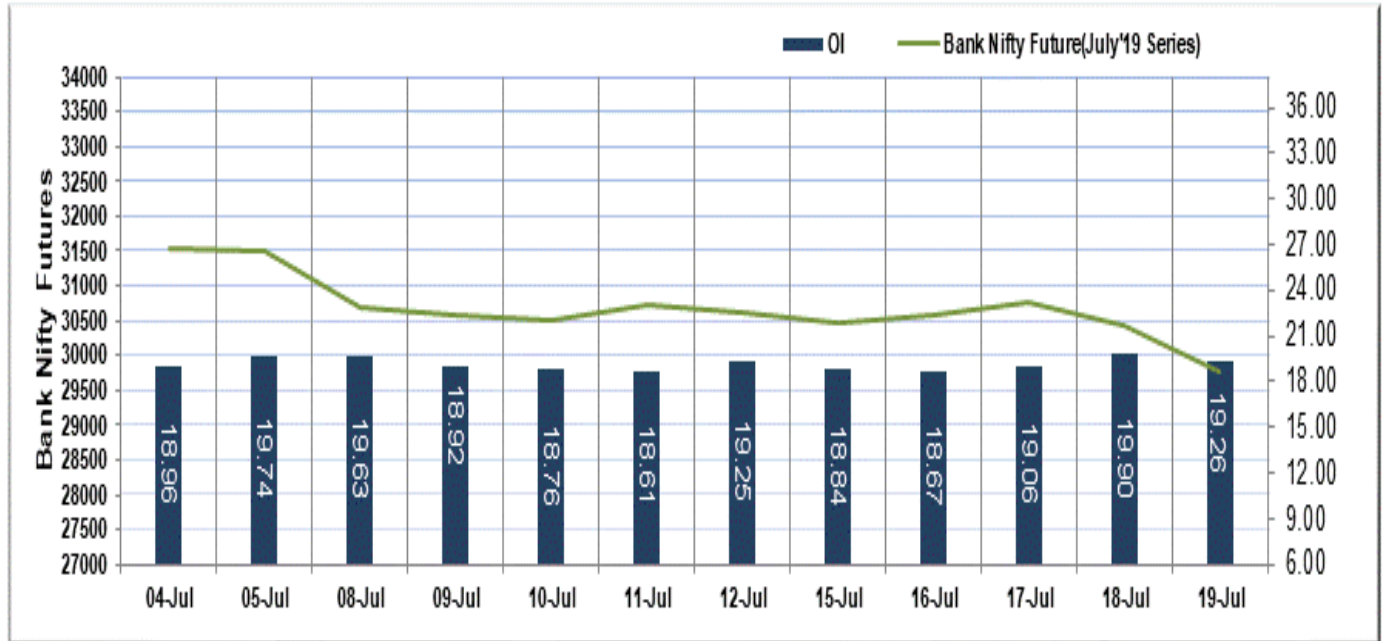
Market TO	Current	Previous	Net%
BSE CASH	2302	2314	(1)
NSE CASH	38385	33623	14
NSE FO	1125855	1947254	(42)

FII Derivatives	Buy	Sell	Net
Ind. Futures	4731	5790	(1059)
Ind. Options	195836	196866	(1030)
Stk. Futures	17295	17371	(75)
Stk. Options	8538	8689	(150)

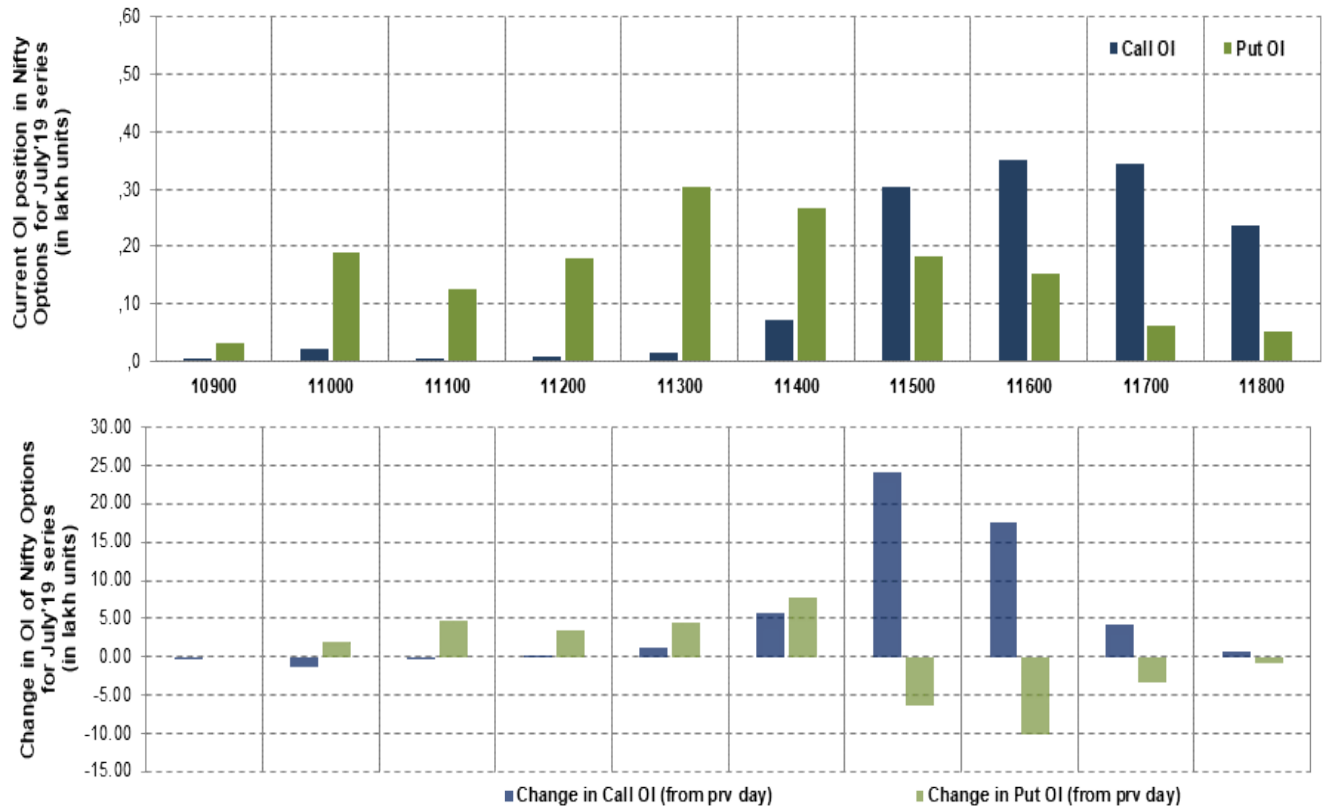
Nifty Futures



Bank Nifty Futures



Nifty Options



Note – Change in OI of Nifty Options refers to change from previous trading day
 Source-NSE, SIHL Derivatives Research (Institutional Equities)

- Among Nifty calls 11,600 SP from the July month expiry was the most active call with an addition of 1.80 million in open interest.
- Among Nifty puts, 11,300 SP from the July month expiry was the most active put with an addition of 0.44 million open interests.
- The maximum OI outstanding for Calls was at 11,600 SP (3.52mn) and that for Puts was at 11,300 SP (3.04mn)

Nifty Technical & Indices Levels

1-Nifty 50 - 19/07/19
 Avg Avg



Nifty Cash prices have settled at 11419.25 down by 1.53 percent from the previous close. On the upper side it has resistance of 11500 and 11550 levels, while lower side it has support of 11350 and 11300 levels. Intraday traders should be cautious and take position accordingly.

Fresh Longs ↑ Open Interest ↑ Price					
Scrip	Prev. OI	Cur. OI	% Chg. OI	LTP	Price % Chg
SRF	10,10,500	11,12,000	10.04	2681.85	1.05
BEL	2,56,50,000	2,80,62,000	9.40	98.40	1.97
IGL	39,71,000	41,41,500	4.29	319.90	0.80
TORNTPOWER	38,70,000	38,85,000	0.39	306.50	0.31
Short-Covering ↓ Open Interest ↑ Price					
Scrip	Prev. OI	Cur. OI	% Chg. OI	LTP	Price % Chg
BPCL	12414600	11574000	-6.77	351.45	0.41
TATAPOWER	5,15,70,000	4,76,82,000	-7.54	66.60	0.15
JUSTDIAL	29,70,800	27,34,200	-7.96	737.85	1.03
ENGINEERSIN	87,44,600	80,13,200	-8.36	106.55	0.90
Fresh Shorts ↑ Open Interest ↓ Price					
Scrip	Prev. OI	Cur. OI	% Chg. OI	LTP	Price % Chg
OIL	81,74,595	95,68,185	17.05	157.90	-3.25
RBLBANK	74,61,600	84,69,600	13.51	501.55	-13.82
AMARAJABAT	13,13,900	13,87,400	5.59	603.60	-5.08
EQUITAS	1,12,40,000	1,18,36,000	5.30	115.70	-6.13
Long Unwinding ↓ Open Interest ↓ Price					
Scrip	Prev. OI	Cur. OI	% Chg. OI	LTP	Price % Chg
ARVIND	78,72,000	69,36,000	-11.89	57.55	-3.76
TATAELXSI	22,83,600	19,32,600	-15.37	701.25	-4.46
INDUSINDBK	1,07,27,600	88,17,200	-17.81	1421.45	-3.63
ADANIPOWER	12,16,20,000	9,41,80,000	-22.56	60.70	-2.80

Disclaimer:

The Information provided by SMS or in newsletter or in any document has been prepared by Shah Investor's Home Ltd (SIHL). The Information provided by SMS or in newsletter does not constitute an offer or solicitation for the purchase or sale of any financial instrument or as an official confirmation of any transaction. The information contained herein is from publicly available data or other sources believed to be reliable, but we do not represent that it is accurate or complete and it should not be relied on as such. SIHL or any of its affiliates/ group companies shall not be in any way responsible for any loss or damage that may arise to any person from any inadvertent error in the information contained in this report or SMS. This Information provided by SMS, reports or in newsletter is provided for assistance only and is not intended to be and must not alone be taken as the basis for an investment decision. The user assumes the entire risk of any use made of this information. Each recipient of this Information provided by SMS, report or in newsletter should make such investigation as it deems necessary to arrive at an independent evaluation of an investment in the securities of companies referred to in this information provided by SMS, report or in newsletter (including the merits and risks involved), and should consult his own advisors to determine the merits and risks of such investment. The investment discussed or views expressed may not be suitable for all investors. This information is strictly confidential and is being furnished to you solely for your information.

The information should not be reproduced or redistributed or passed on directly or indirectly in any form to any other person or published, copied, in whole or in part, for any purpose. The information provided by report or SMS is not directed or intended for distribution to, or use by, any person or entity who is a citizen or resident of or located in any locality, state, country or other jurisdiction, where such distribution, publication, availability or use would be contrary to law, regulation or which would subject SIHL and affiliates/ group companies to any registration or licensing requirements within such jurisdiction. The distribution of this Information provided by SMS or in newsletter in certain jurisdictions may be restricted by law, and persons in whose possession this Information provided by SMS or in newsletter comes, should inform themselves about and observe, any such restrictions. The information given or Information provided by SMS, report or in newsletter is as of the date of the issue date of report or the date on which SMS provided and there can be no assurance that future results or events will be consistent with this information. This information is subject to change without any prior notice. SIHL reserves the right to make modifications and alterations to this statement as may be required from time to time. However, SIHL is under no obligation to update or keep the information current.

Nevertheless, SIHL is committed to providing independent and transparent recommendation to its client and would be happy to provide any information in response to specific client queries. Neither SIHL nor any of its affiliates, group companies, directors, employees, agents or representatives shall be liable for any damages whether direct, indirect, special or consequential including lost revenue or lost profits that may arise from or in connection with the use of the information. Past performance is not necessarily a guide to future performance. The disclosures of interest statements incorporated in the Information provided by SMS, report or in newsletter are provided solely to enhance the transparency and should not be treated as endorsement of the views expressed in the report. The analyst for this report certifies that all of the views expressed in this report accurately reflect his or her personal views about the subject company or companies and its or their securities, and no part of his or her compensation was, is or will be, directly or indirectly related to specific recommendations or views expressed in this report.

About Us:

Shah Investor's Home Ltd (SIHL) is an ISO 9001:2008 Certified financial Services Company established in 1994 at Ahmadabad, Gujarat. Customer satisfaction is guaranteed through our diversified product portfolio, professional management and customer first attitude. SIHL was the first broking house in Gujarat with membership in National Securities Depository Ltd (NSDL) and was the first broking name providing services in NSE F&O in Ahmedabad. Today, SIHL ranks among the top most players in Gujarat in retail stock broking area with 45 branches, 350 franchisee across India and providing service to more than 1,25,000 clients.